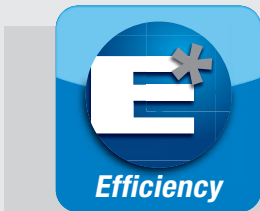
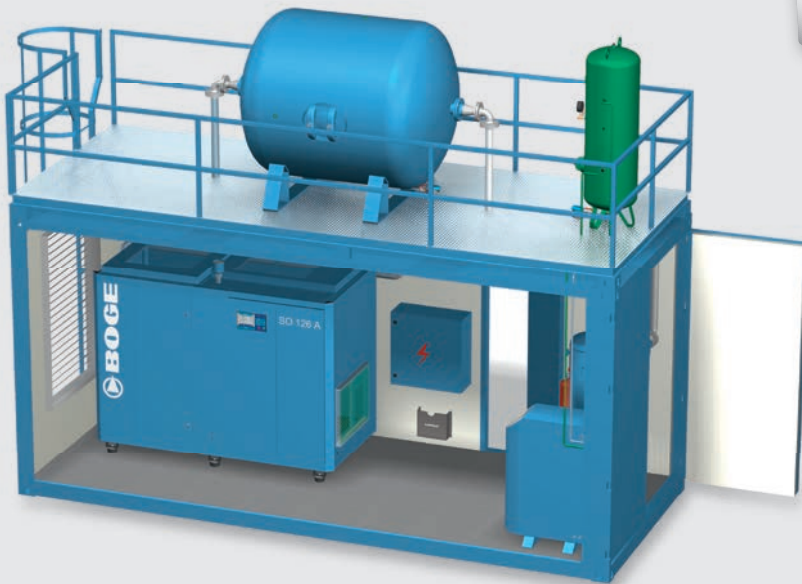


# Complete, individual, turnkey: **BOGE Compressed Air and N2 Station**

Compressed air delivery rate 4.15–13.01 m<sup>3</sup>/min  
Max. pressure 10 bar (g)  
N2 purity up to 99.999% / 5.0 / 10 ppm  
N2 delivery rate 0.4 Nm<sup>3</sup>/h

**Oil-free compressed air + nitrogen  
in a turnkey container solution**



#### COMPLETELY OIL-FREE

The individually designed BOGE Turnkey System delivers oil-free compressed air up to 10 bar. Where space is limited it can be set up outside industrial halls as a compact container solution.

#### COMPLETELY VERSATILE

In addition to producing oil-free compressed air, the system offers efficient nitrogen generation in purities between 95% and 99.999%. As the PSA technology requires minimal compressed air, it is a particularly energy-efficient solution.

#### COMPLETELY EFFICIENT

The screw compressor has an integrated frequency converter, which continually adjusts capacity to demands. Dynamic speed control achieves infinitely variable part-load control.

#### COMPLETELY INDIVIDUAL

Each BOGE Turnkey System is individually tailored to the needs of the customer. After intensive consultation and analysis we develop a tailored solution for the specifications, produce and install the components and, if required, provide on-going maintenance of the system.

**A prime example of efficient compressed air systems:** The BOGE Compressed Air and N2 Station produces oil-free compressed air at 10 bar (g) and high-purity nitrogen in a turnkey all-in-one solution. It is ideal in situations where space is limited and can be tailored to the requirements of specific customers and specific sectors.

**BOGE KOMPRESSOREN**

**Otto Boge GmbH & Co. KG**

P. O. Box 10 07 13 · 33507 Bielefeld, Germany

Otto-Boge-Straße 1–7 · 33739 Bielefeld, Germany

phone +49 5206 601-0

fax +49 5206 601-200

info@boge.com · [www.boge.com](http://www.boge.com)

## AN OVERVIEW OF THE BOGE STATION



### CONTAINER 20 FT HQ

- dimensions (H x W x L) 2 880 x 2 438 x 6 058 mm
- intake air regulation
- air intake filter
- thermostatically controlled exhaust air ventilator
- heat from compressor makes it suitable for both summer and winter use
- 2 kW heater
- capacity distribution (system supplied with only one supply line)
- stainless steel pipework
- 60 mm of insulation

### PLATFORM WITH LADDER WITH SAFETY CAGE

- dimensions (H x W x L) 1 275 x 2 438 x 6 058 mm + ladder
- galvanised steel

### 1 SO 126 AF OIL-FREE SCREW COMPRESSOR

- volume flow rate 4.15–13.01 m<sup>3</sup>/min
- maximum pressure 10 bar(g)
- motor output 90 kW

### 2 CYCLONE SEPARATOR Z 125 N WITH BEKOMAT

### 3 DAZ 161-2 COMPRESSED AIR DRYER

- dewpoint –40°C

### 4 COMPRESSED AIR RECEIVER 11 BAR

- 4 000 l
- horizontal

### 5 BOGE B PN NITROGEN GENERATOR

- N2 volume flow rate: 5.7 Nm<sup>3</sup>/h – 0.4 Nm<sup>3</sup>/h
- N2 purity: 95 % to 99.999 %

### 6 NITROGEN RECEIVER 11 BAR

- 270 l
- vertical

**We also design BOGE Container solutions for extreme ambient temperatures (–40 to +45°C) on request. We would be happy to build you a Container System tailored to your individual requirements!**